



VOLTCRAFT®

VOLTCRAFT® - TOP PERFORMANCE IN EVERY WAY

“For more than 25 years, our product range has been dynamically adapting to the constant changes in the industry. We commit to offering first-class quality to our customers while delivering an excellent cost-performance ratio. This philosophy remains the cornerstone of Voltcraft’s success.”

VIT 500 **VARIABLE ISOLATING** **TRANSFORMER**

Nº 51 27 66

CE

VERSION 03/10

The adjustable isolating transformer is ideal for laboratories, test rigs and service workshops. The built-in isolating transformer provides galvanic separation between the primary and the secondary windings. The robust, solid metal housing with handle is suitable for mobile use. The transformer includes current and voltage meters, as well as an indicator light, a fuse and a protective switch. The output is carried out via an isolated ground receptacle.

HIGHLIGHTS

Perfect for servicing, laboratories, test rigs, etc. //

Dual LCD for output voltage and current //

Adjustable output from 1 - 250 V/AC //

Output overcurrent protection //

Inrush current protection //

Galvanic separation //

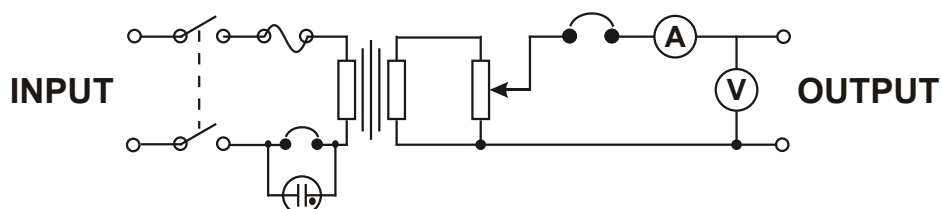
48.25 cm (19") rack //



GENERAL SPECIFICATIONS

OUTPUT: 1 x Isolated ground receptacle **OUTPUT VOLTAGE:** 1 - 250 V/AC **OUTPUT CURRENT:** 2 A **INPUT VOLTAGE:** 230 V/AC, 50-60 Hz **WEIGHT:** 17 kg **DIMENSIONS (W x H x D):** 482 x 250 x 180 mm

CIRCUIT DIAGRAM



PACKAGE CONTENT

Variable isolating transformer // Operating instructions

This data sheet is published by Voltcraft®, Lindenweg 15, D-92242 Hirschau / Germany, Phone +49 180 586 582 7. The data sheet reflects the current technical specifications at time of print. We reserve the right to change the technical or physical specifications.